

A PROJECT BY



STRATEGIC PARTNER



**ARCHITECT**

YW ARCHITECTS  
AR. YOGESH WAKCHAURE

**ARCHITECT** (SALES OFFICE SAMPLE FLAT)

PLATINUM ARCHITECTS DESIGNERS  
VISHAL PANSARE

**RCC CONSULTANT**

RK RANDHAVE CONSULTANT  
RAM RANDHAVE

**MEP CONSULTANT**

SKYLINE MEP CONSULTANTS  
NANDKUMAR JORWEKAR  
RAHUL PAWAR

**LANDSCAPE CONSULTANT**

ECO ENVISAGE PVT. LTD  
JAYESH KASAT

**EC CONSULTANT**

SUSTAINERA SOLUTIONS PVT LTD  
AMOGH BODAS

**SITE:**

Platinum Citylights, Gat. No. 361, Near Swami Samarth Math  
Kudlewasti, Moshi, Pune 411039

**OFFICE:**

Platinum Group, Office No. 304, MSR Capital, Morewadi  
Pimpri Colony, Pune, Maharashtra 411018

**9090 53 6161**  
**9090 57 6161**

[www.platinumcitylights.com](http://www.platinumcitylights.com)



SCAN QR CODE  
FOR SITE LOCATION



MAHARera No.  
P52100054911

Disclaimer: All the designs, images, specifications, facilities and other details herein are purely indicative in nature and the intended recipient should note that these are to be treated as purely provisional and informative and as such only. We reserve the right to modify / change / amend / alter any of the aforesaid in the best interest of the development and as per RERA regulations. The contents herein should not be construed as an offer / invitation to offer / contract. This printed material inter alia images, contents therein are for representative purpose only. Any party desirous / interested in the project needs to enter in to agreement for sale.

www.thetribe.solutions

**Yeh ghar hai khaas**





**17**  
Years  
Experience



**2,533**  
Satisfied Families



**18,80,000**  
Sq.Ft.  
Completed  
Construction



**13**  
Completed  
Projects



**7**  
Upcoming  
Projects



**38,000**  
Sq.Ft.  
Upcoming  
Construction



## PLATINUM GROUP

With over two decades of experience, Platinum Group has established itself as one of the leading real estate developers in Pune & PCMC. We go above and beyond perceived limitations to create projects that stand the test of time. The customer-centric approach is a cornerstone of our business, ensuring every client receives personalised attention and exceptional service.

Platinum Group pays careful attention to all factors, including modern-day necessities. Our team of professionals ensures that every project we undertake is a perfect combination of style, functionality and sustainability. Our commitment to top-notch amenities and specifications ensures that every space we create is highly efficient and effective, enhancing the quality of life.

Our unwavering commitment to excellence and attention to detail set's us apart. We are devoted to creating superior-quality landmarks that make a lasting impression. From the construction materials to the final finishing touches, we leave no stone unturned in building properties that exceed your expectations.

Families Flourish Where  
Urban Life Converges



# Yeh ghar hai khaas

Ab sab kuch hai paas

## Your Urban Oasis in the Heart of Moshi

In the fast-paced world, Citylights redefines modern living with Urban Nature Homes strategically located in Moshi. Enjoy proximity to schools, hospitals, IT parks, and shopping malls, seamlessly integrating convenience into your everyday life.

Embrace the harmony of contemporary living and natural tranquility in each thoughtfully designed residence at Citylights. As an added advantage, the upcoming Pune International Exhibition & Convention Center (PIECC) nearby transforms your home into an investment hub, promising future opportunities. Your escape into urban nature living begins at Citylights – Where Every Home is an Investment in Your Future.



Schools



Super Markets



Multispeciality Hospitals



Shopping Malls



PLATINUM  
**CITYLIGHTS**  
2 and 3 BHK UrbaNature Homes

Experience a paradise on earth with Citylights, the ultimate destination for luxurious urban living. Our 2 and 3 BHK UrbaNature Homes in Moshi redefine opulence and bring a touch of sophistication to your lifestyle. Indulge in the perfect blend of convenience and luxury with top-notch amenities and easy access to necessities.

Every detail of Citylights has been designed to offer the best modern living experience. Whether it's the breathtaking views, luxurious interiors, or lush greenery, we have something special here for you.



# Yeh ghar hai khaas

## Khushiyon ka hai ehsaas

Indulge in ultimate joy, comfort and happiness. At Citylights, we understand the value of a peaceful and fulfilling lifestyle. Our luxurious urban living experience offers the perfect sanctuary to unwind after a hectic day. From the moment you step into your home, you'll be enveloped in an atmosphere of warmth and comfort that's hard to find elsewhere. Our good neighbourhood and tranquil surroundings provide a peaceful escape from the hustle and bustle of the city. We strive to provide the perfect environment to make lasting memories with your loved ones.



Artistic impression

# Yeh ghar hai khaas

## Har pal mein hai mithaas

Experience the magic of our homes, where every moment is special and every day is filled with sweetness. Our commitment to top-class amenities ensures that every moment spent here is a special one. Whether you're in the mood for some invigorating exercise, a relaxing swim or just want to spend quality time with your family, we have everything you need to make it happen.



Artistic Impression



ENTRY GATE





# COMMON AMENITIES

## GROUND FLOOR:



KIDS PLAY AREA



AMPHITHEATRE

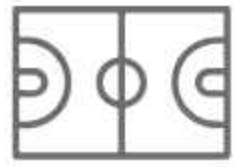


SWIMMING POOL



CLUBHOUSE

## PODIUM FLOOR:



MULTIPURPOSE COURT



KIDS PLAY AREA



CRECHE



SENIOR CITIZEN'S SITOUT



GAMES ZONE



DRIVER ROOMS



COVERED BOARD GAME ZONE



ACCUPRESSURE ZONE

## TERRACE FLOOR:



MULTIPURPOSE LAWN



MULTIPURPOSE DECK



CAFE WITH SEATING



GAZEBO



REFLEXOLOGY ZONE



OPEN GYM / FITNESS CENTRE



SUN DECK FOR YOGA, MEDITATION



GUPPA CORNER



STARGAZING DECK



CO-WORKING SPACE (SEMICOVERED)



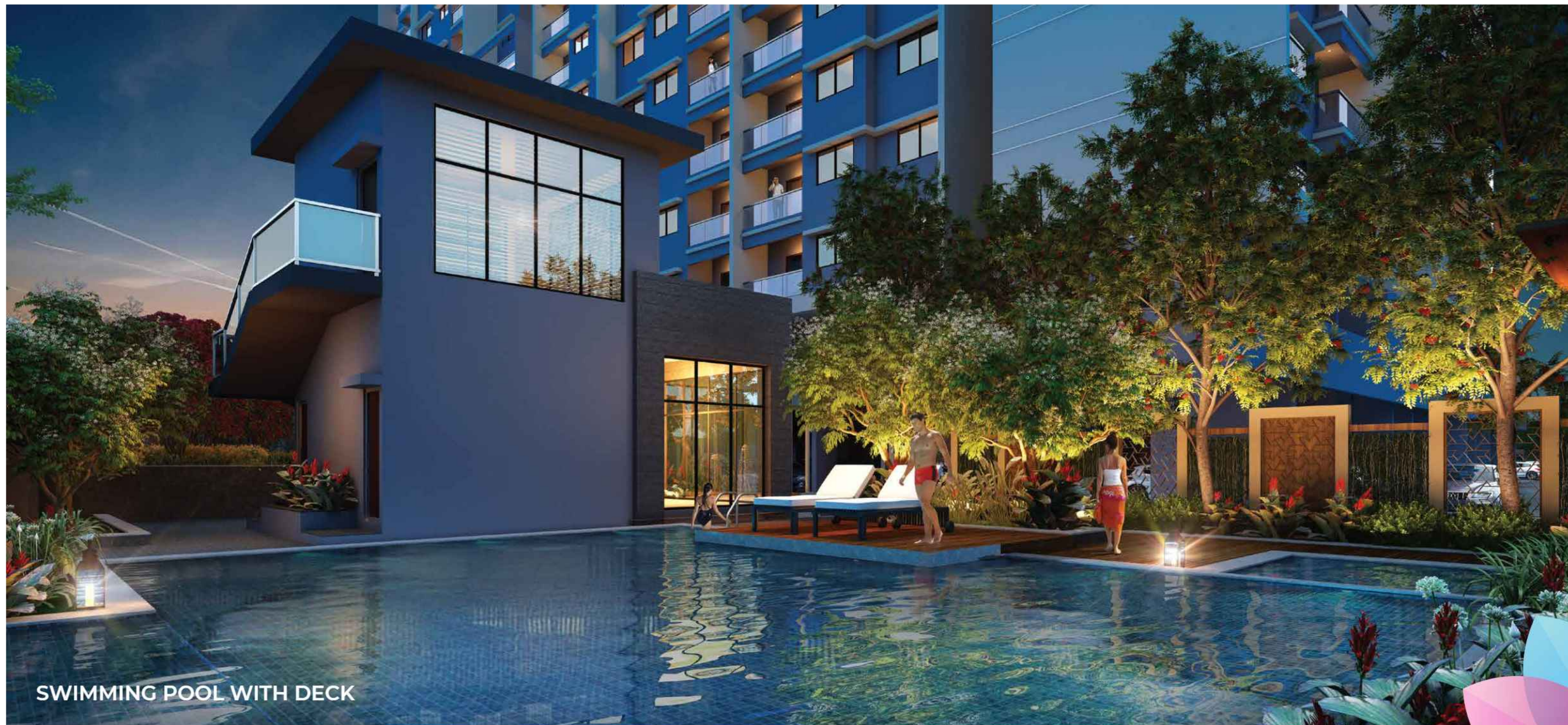
PRAYER AREA





KIDS PLAY AREA





SWIMMING POOL WITH DECK





OPEN GYM



ROOFTOP WORK PODS



ROOFTOP GARDEN



ROOFTOP CAFE / WORK SPACE



CLUB HOUSE



AMPHITHEATRE



SEATING ALONG WALKWAY



MULTIPURPOSE COURT



**2 BHK**  
(CUT SECTION)

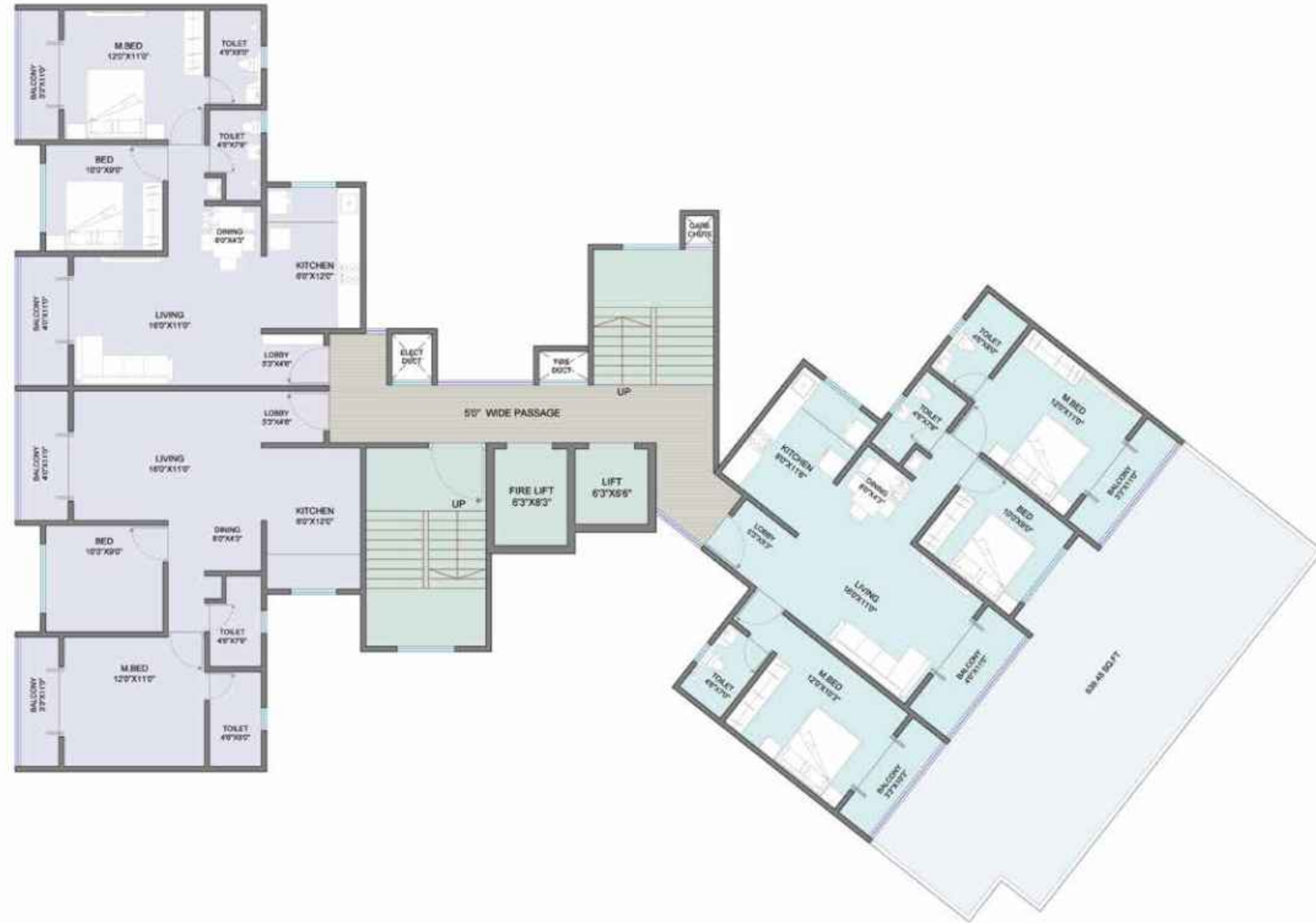


**3 BHK**  
(CUT SECTION)



# A WING

## 1<sup>ST</sup> FLOOR PLAN

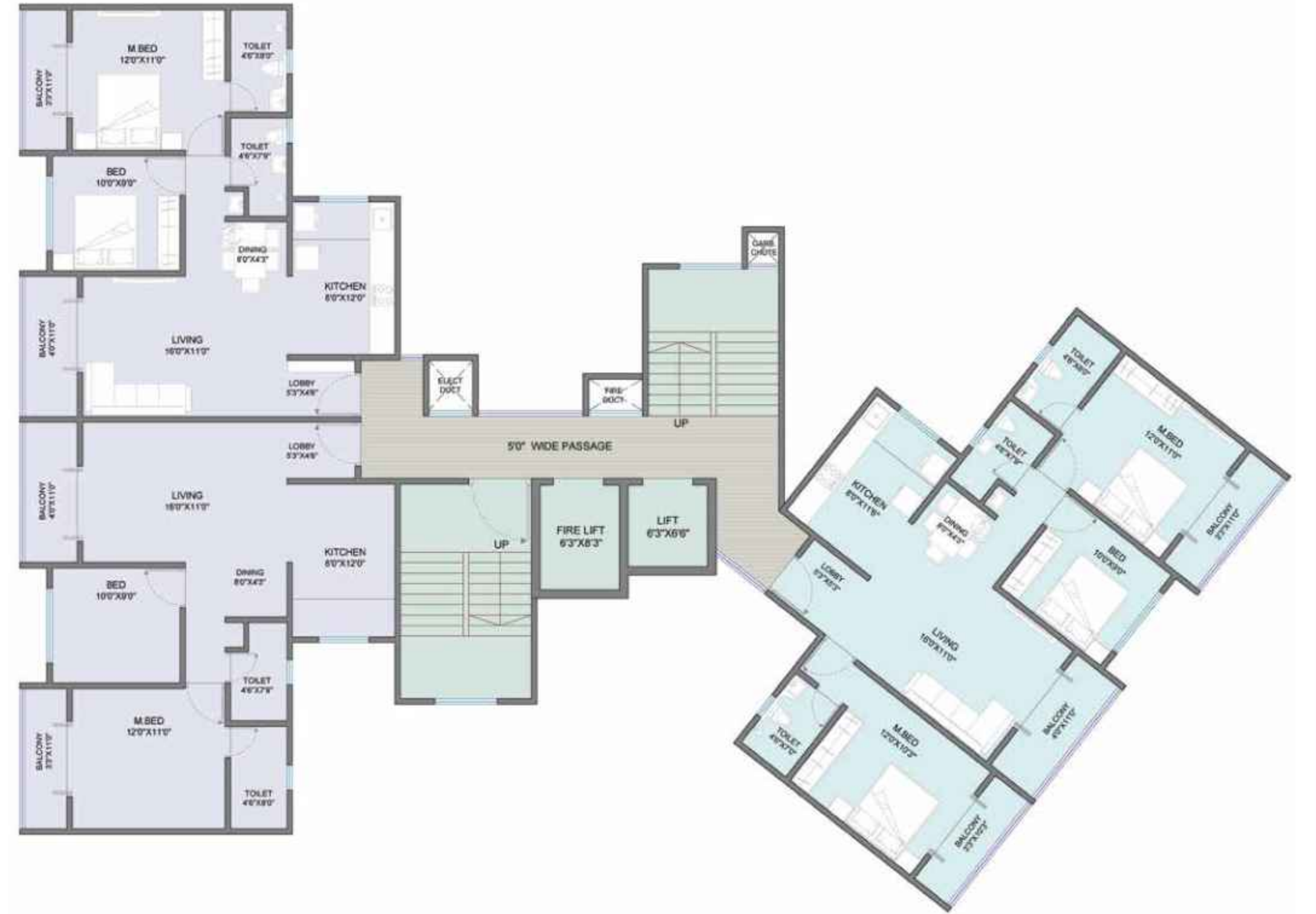


Flat No.	Flat Type	RERA Carpet Area (Sq.M.)	RERA Carpet Area (Sq.Ft.)
101	3 BHK	90.98	979.31
102	2 BHK	70.60	759.94
103	2 BHK	70.60	759.94



# A WING

## TYPICAL FLOOR PLAN 2<sup>ND</sup> TO 6<sup>TH</sup>, 8<sup>TH</sup> TO 11<sup>TH</sup>, 13<sup>TH</sup> TO 16<sup>TH</sup> FLOOR

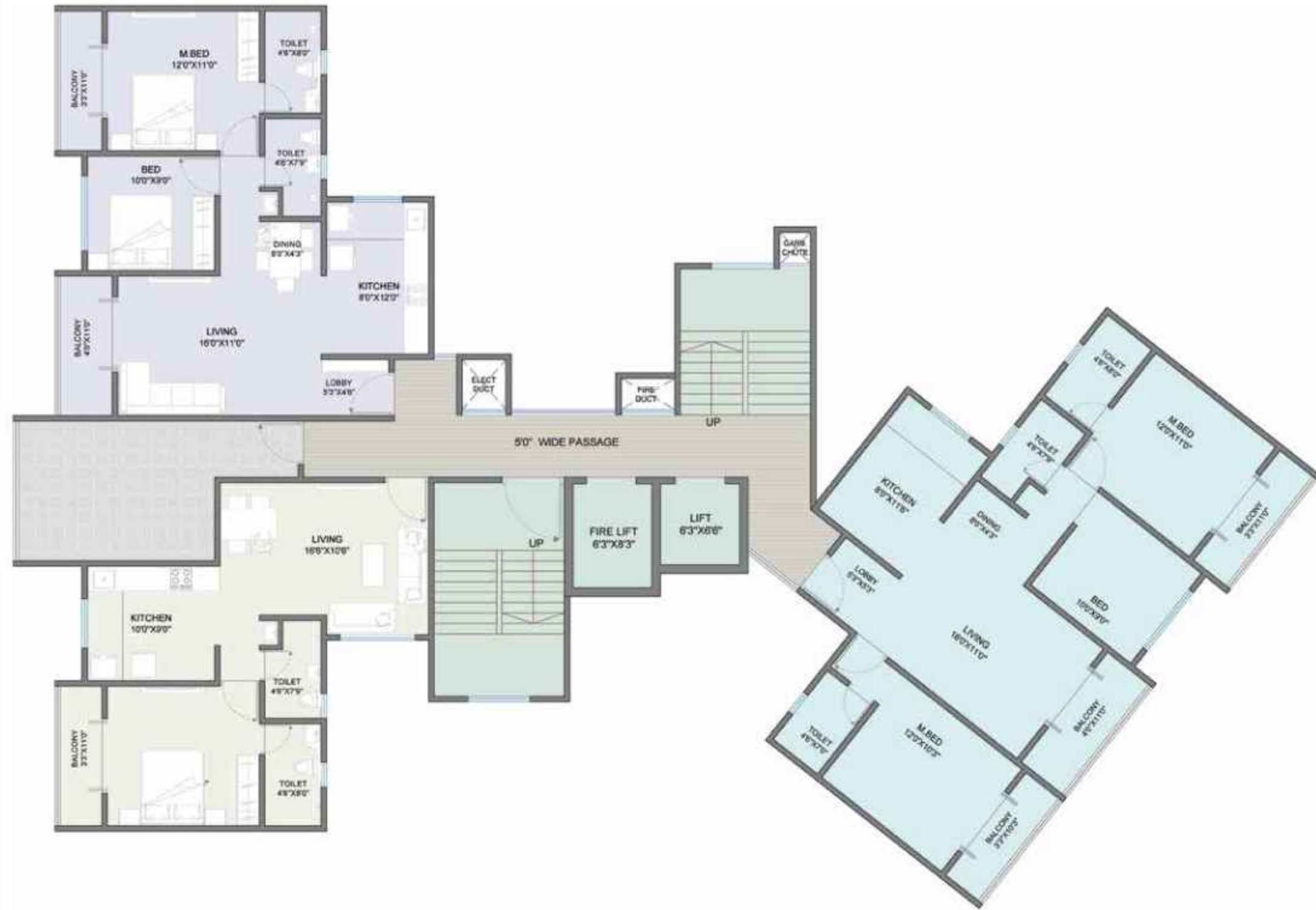


Flat No.	Flat Type	RERA Carpet Area (Sq.M.)	RERA Carpet Area (Sq.Ft.)
201, 301, 401, 501, 601, 801, 901, 1001, 1101, 1301, 1401, 1501, 1601	3 BHK	90.98	979.31
202, 302, 402, 502, 602, 802, 902, 1002, 1102, 1302, 1402, 1502, 1602	2 BHK	70.60	759.94
203, 303, 403, 503, 603, 803, 903, 1003, 1103, 1303, 1403, 1503, 1603	2 BHK	70.60	759.94



# A WING

## 7<sup>TH</sup> & 12<sup>TH</sup> REFUGE FLOOR PLAN



Flat No.	Flat Type	RERA Carpet Area (Sq.M.)	RERA Carpet Area (Sq.Ft.)
701, 1201	3 BHK	90.98	979.31
702, 1202	1 BHK	51.41	553.38
703, 1203	2 BHK	70.60	759.94



# B WING

## 1<sup>ST</sup> FLOOR PLAN



Flat No.	Flat Type	RERA Carpet Area (Sq.M.)	RERA Carpet Area (Sq.Ft.)
101	2 BHK	64.57	695.03
102	2 BHK	64.57	695.03
103	2 BHK	64.57	695.03
104	2 BHK	64.57	695.03
107	1 BHK	50.48	543.37



# B WING

## TYPICAL FLOOR PLAN 2<sup>ND</sup> TO 6<sup>TH</sup>, 8<sup>TH</sup> TO 11<sup>TH</sup>, 13<sup>TH</sup> TO 16<sup>TH</sup> FLOOR



Flat No.	Flat Type	RERA Carpet Area (Sq.M.)	RERA Carpet Area (Sq.Ft.)
201, 301, 401, 501, 601, 801, 901, 1001, 1101, 1301, 1401, 1501	2 BHK	64.57	695.03
202, 302, 402, 502, 602, 802, 902, 1002, 1102, 1302, 1402, 1502	2 BHK	64.57	695.03
203, 303, 403, 503, 603, 803, 903, 1003, 1103, 1303, 1403, 1503	2 BHK	64.57	695.03
204, 304, 404, 504, 604, 804, 904, 1004, 1104, 1304, 1404, 1504	2 BHK	64.57	695.03
205, 305, 405, 505, 605, 805, 905, 1005, 1105, 1305, 1405, 1505	1 BHK	44.53	479.32
206, 306, 406, 506, 606, 806, 906, 1006, 1106, 1306, 1406, 1506	1 BHK	50.48	543.37
207, 307, 407, 507, 607, 807, 907, 1007, 1107, 1307, 1407, 1507	1 BHK	50.48	543.37



# B WING

## 7<sup>TH</sup> & 12<sup>TH</sup> REFUGE FLOOR PLAN



Flat No.	Flat Type	RERA Carpet Area (Sq.M.)	RERA Carpet Area (Sq.Ft.)
701, 1201	2 BHK	64.57	695.03
702, 1202	1 BHK	47.97	516.35
703, 1203	1 BHK	45.32	487.82
704, 1204	2 BHK	64.57	695.03
705, 1205	1 BHK	44.53	479.32
706, 1206	1 BHK	50.48	543.37
707, 1207	1 BHK	50.48	543.37



# B WING

## 16<sup>TH</sup> FLOOR PLAN



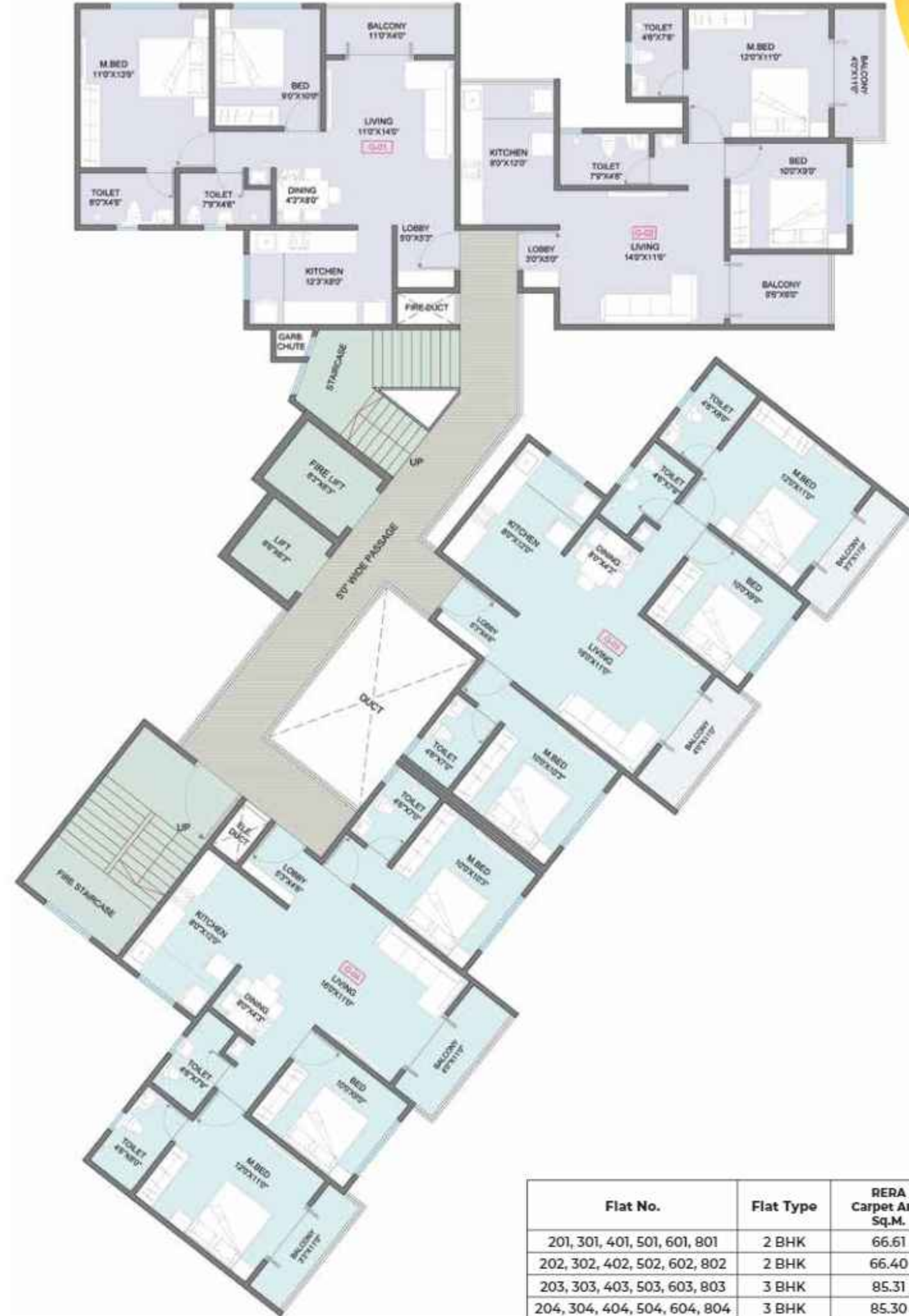
# G WING

## 1<sup>ST</sup> FLOOR PLAN



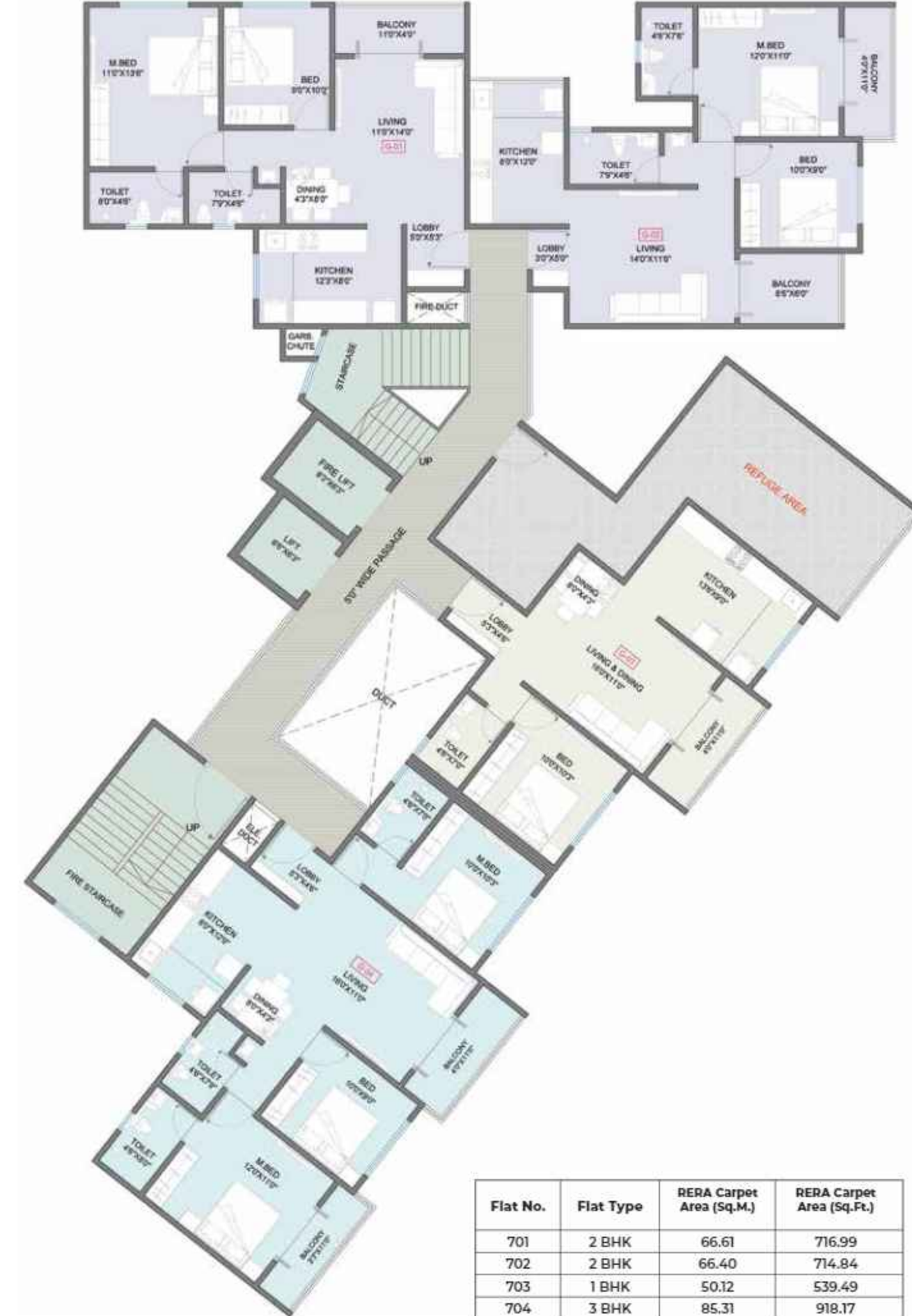
# G WING

## 2<sup>ND</sup> TO 6<sup>TH</sup>, 8<sup>TH</sup> FLOOR PLAN



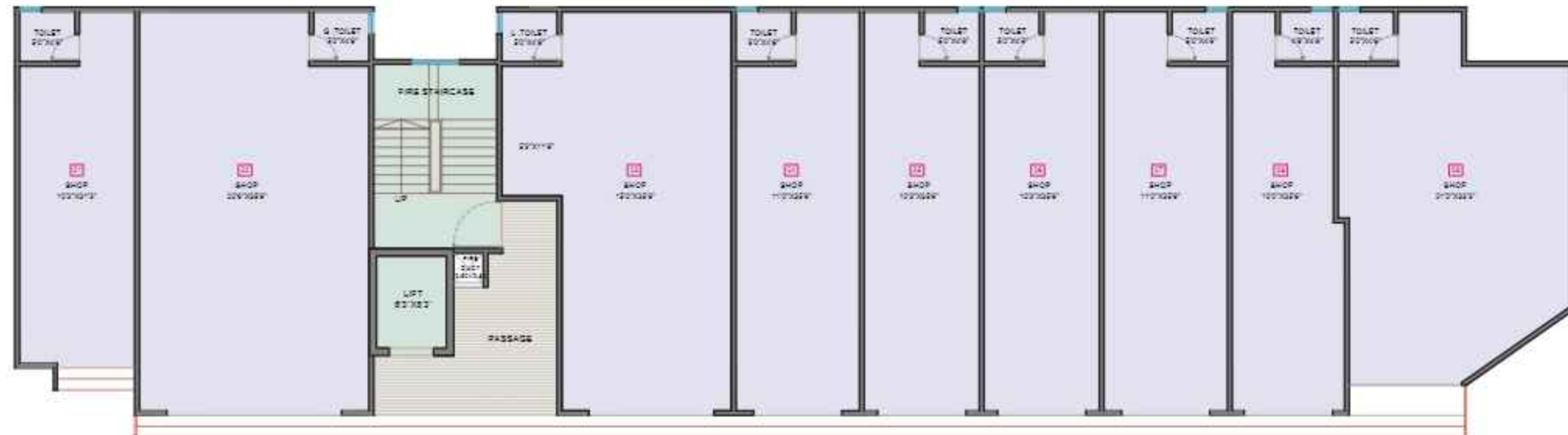
# G WING

## 7<sup>TH</sup> REFUGE FLOOR PLAN



# COMMERCIAL

## GROUND FLOOR PLAN

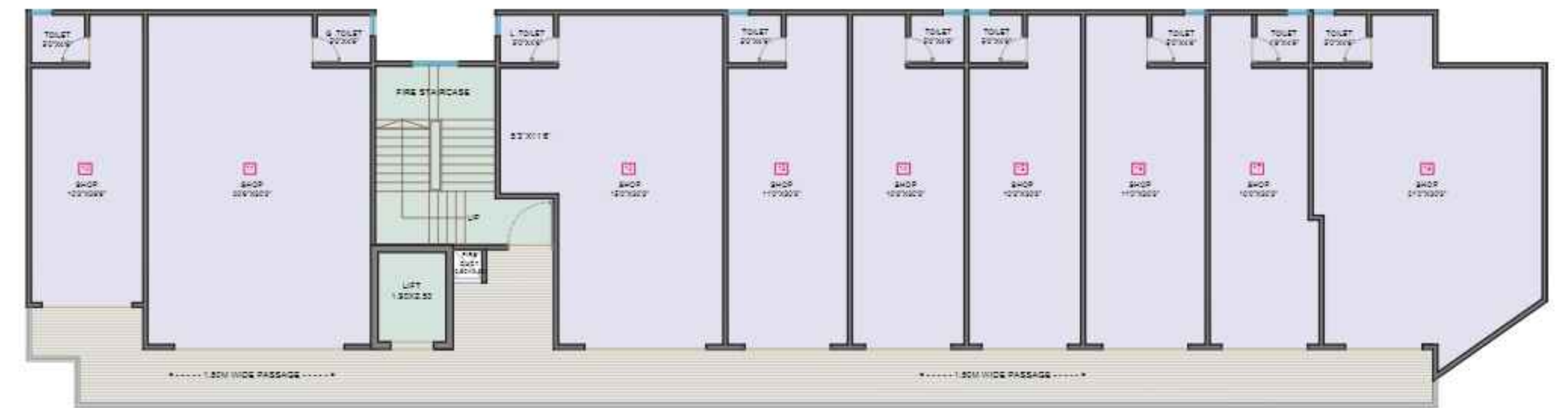


Flat Type	RERA Carpet Area (Sq.M.)	RERA Carpet Area (Sq.Ft.)
SHOP 1	30.06	323.57
SHOP 2	67.99	731.84
SHOP 3	58.35	628.08
SHOP 4	36.57	393.64
SHOP 5	34.14	367.48
SHOP 6	34.14	367.48
SHOP 7	36.57	393.64
SHOP 8	31.60	340.14
SHOP 9	55.52	597.62



# COMMERCIAL

## PODIUM FLOOR PLAN



Flat Type	RERA Carpet Area (Sq.M.)	RERA Carpet Area (Sq.Ft.)
SHOP 10	25.43	273.73
SHOP 11	57.87	623.02
SHOP 12	50.87	547.56
SHOP 13	31.12	334.98
SHOP 14	29.06	312.80
SHOP 15	29.06	312.80
SHOP 16	31.12	334.98
SHOP 17	26.65	286.86
SHOP 18	52.85	568.88

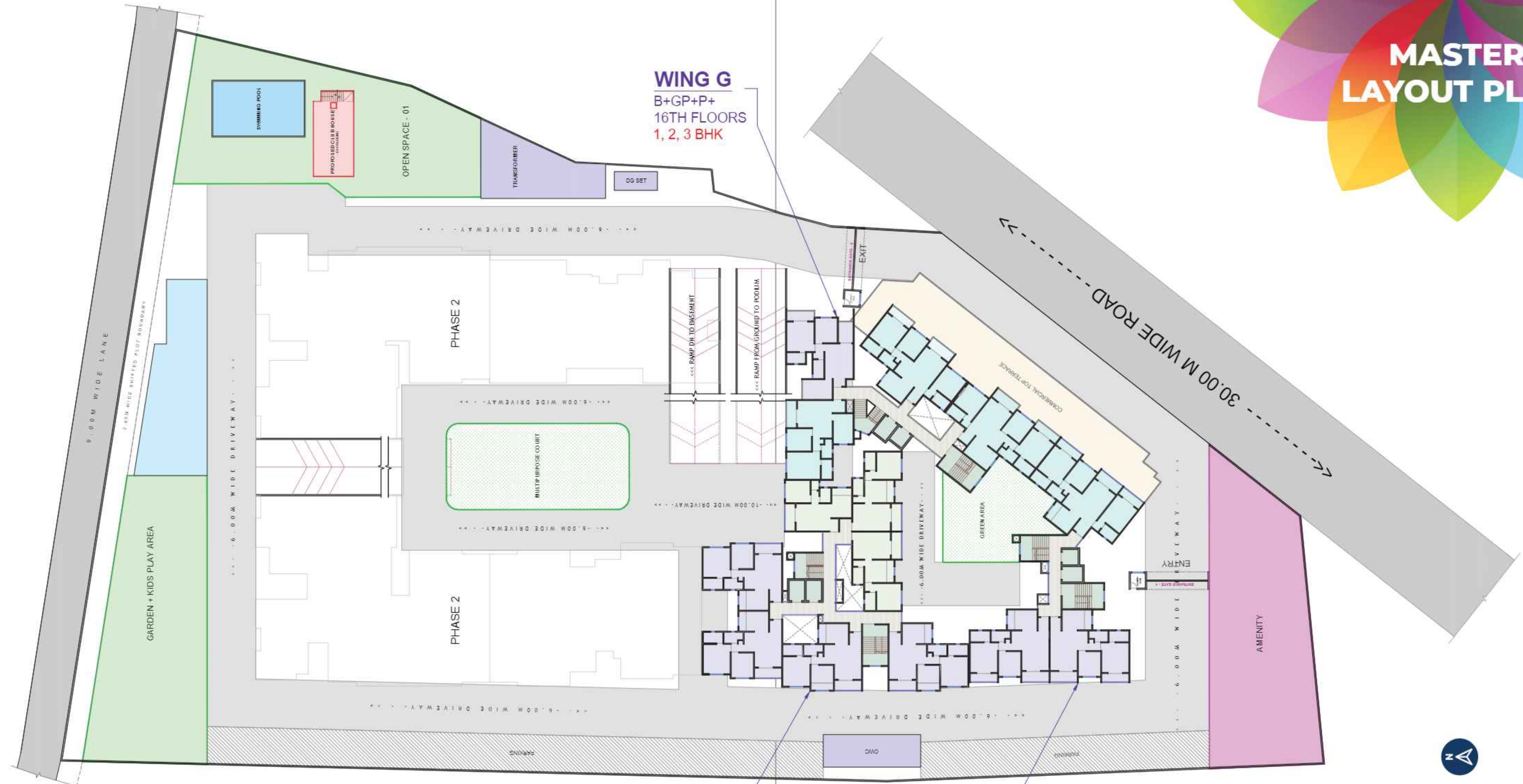




# ROOFTOP AMENITIES LAYOUT



# MASTER LAYOUT PLAN



**WING G**  
B+GP+P+  
16TH FLOORS  
1, 2, 3 BHK

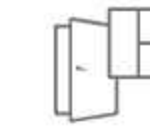
**WING B**  
B+GP+P+  
16TH FLOORS  
1, 2 BHK

**WING A**  
B+GP+P+  
16TH FLOORS  
1, 2, 3 BHK





## SPECIFICATIONS



### WINDOWS & DOORS:

- Flush Door with Laminate Finish
- Powder Coated Aluminium Windows
- 3 Track with Mosquito Net



### CP & SANITARY FITTINGS:

- Jaquar Tap Fitting or Equivalent
- Jaquar Sanitary Fittings or Equivalent



### SAFETY & SECURITY:

- CCTV in Common Areas
- Firefighting System
- Boom Barrier at Entry Gate



### HOME AUTOMATION:

- TV Point plus Telephone Point in Living Room
- AC Point in Master Bedroom
- Access Control in Lobby



### PLASTER & PAINT:

- Acrylic Premium Emulsion Paint
- External Paint - Apex



### PLUMBING:

- Solar Water in Master Bathroom
- UPVC Water Line



### FLOORING:

- 1200 X 600 mm Vitrified Tiles - Oasis / Varmora or Equivalent in Internal Rooms
- 1200 X 600 mm Wall Tiles for Master Bedroom Toilet
- 600 X 300 mm Ceramic Tiles in Toilet
- Kitchen Otta & Windows Sill - in Granite





## LOCATION MAP



SCAN QR CODE  
FOR SITE LOCATION



**Yeh ghar hai khaas**  
**Ab sab kuch hai paas**

### SCHOOLS

- City Pride School - 9 min
- Priyadarshani School - 8 min
- DnyanBhakti International School - 5 min

### COLLEGES

- MIT Arts Commerce & Science College - 9 min
- Rajmata Jijau College - 16 min

### HOSPITAL

- Unity Hospital - 4 min

### SHOPPING MALLS

- D-Mart - 10 min

### IMPORTANT LANDMARK

#### PIECC

#### SWAMI SAMARTH MATH

#### UPCOMING DEVELOPMENT

SAFARI PARK  
in 200 ACRES

PCMC HOSPITAL  
400 Beds